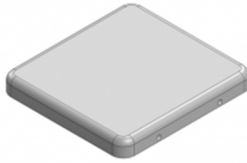


## Introducing: **MS213-10C**



Two-piece Drawn-Seamless EMI/RFI Shield  
COVER **21.7 x 20.3 x 2.5 mm** CRS

## Introducing: **MS213-10CP**



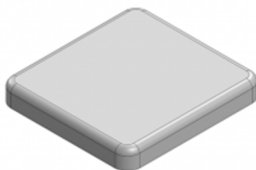
Two-piece Drawn-Seamless EMI/RFI Shield  
COVER **21.7 x 20.3 x 2.5 mm** CRS

## Introducing: **MS213-10F**



Two-piece Drawn-Seamless EMI/RFI Shield  
FRAME **21.3 x 19.9 x 2.9 mm** CRS

## Introducing: **MS213-10S**



One-piece Drawn-Seamless EMI/RFI Shield  
**21.3 x 19.9 x 2.9 mm** CRS SMT